

Overview of nuclear radiation at the internal sensors

Using daily averages the temporal variation of the nuclear radiation inside the tank during 8 years (2007-2015; Days 5520-8446) is shown Figure 1.

The count rate at the gamma sensor is on the order of $2.3 \text{ E}+5$ counts (per 15-minutes) and around 1300 counts at the alpha sensors. In these plots the annual variation dominates the patterns, and a semi-annual periodicity is also observed. Further variations, of shorter wavelength are superimposed on the annual variation. These are composed of multi-day variations and systematic daily signals (Steinitz et al., 2011).

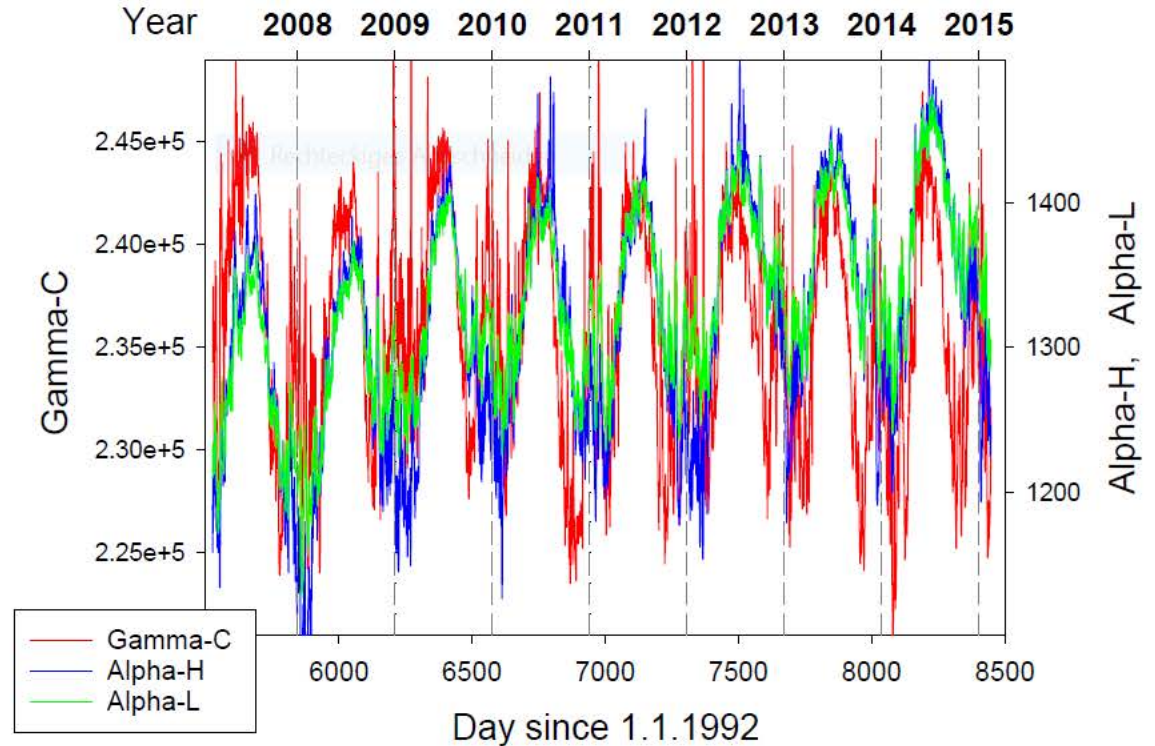


Figure 1: The temporal pattern of gamma and alpha radiation measured by the internal sensors. The plot is based on daily average. 8 years are shown. The vertical dotted lines denote 1st of January.